

Why IMR?

We have a vast range of services and extensive experience working with the gas turbine industry.

We are known around the world for our testing services, including our coatings evaluations, weld evaluations, and failure analysis services.

With extensive coatings evaluations and training, IMR is the world's premiere coatings laboratory.

Our experts are accessible and responsive and understand that you need the right answer, on time.

We are technical professionals, with all of the requisite qualifications and accreditations.

Our analytical reports are comprehensive and written in understandable terms.

We strive to create long term working relationships and would like to earn your business.



IMR Test Labs

131 Woodsedge Drive
Lansing, NY 14882 USA
1.607.533.7000
sales@imrtest.com

IMR Test Labs - Louisville

4510 Robards Lane
Louisville, KY 40218 USA
1.502.810.9007
sales@imrlouisville.com

IMR Test Labs - Portland

5687-A SE International Way
Portland, OR 97222 USA
1.503.653.2904
sales@imrportland.com

IMR Test Labs - Singapore

30 Loyang Way #03-16
Singapore 508769
+65 6592.5325
sales@imrsingapore.com

IMR Test Labs - Suzhou

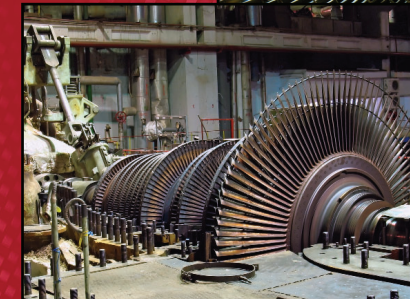
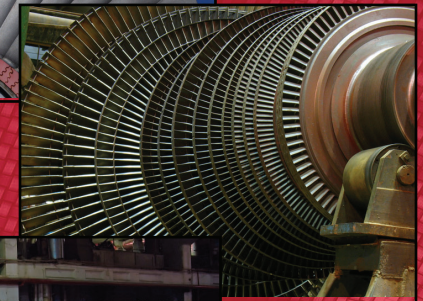
Jiangpu Road 75, Shengpu Town
Suzhou Industrial Park
Jiangsu, China 215126
+86 0512.6295.2682
sales@imrsuzhou.com



CURTISS - WRIGHT

IMR TEST LABS

Analytical Services for the Gas Turbine Industry



www.imrtest.com

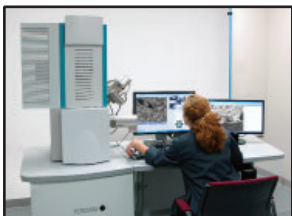
Metallurgical Evaluation

Aggressive Machining Examination
Coating Evaluations
Plating Analysis
Weld Testing & Evaluation
Braze Testing & Evaluation
Metallography
Thermal Spray Coating Analysis



Failure Analysis

Contaminant Analysis
Corrosion Analysis and Simulation
Fracture Mode Determination
Root Cause Determination
SEM/EDX



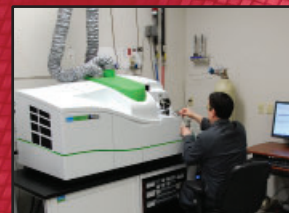
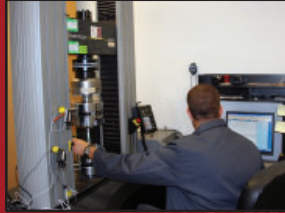
Fatigue Testing

Low Cycle Fatigue
High Cycle Fatigue
Coating Shear Fatigue
Rotating Beam Fatigue



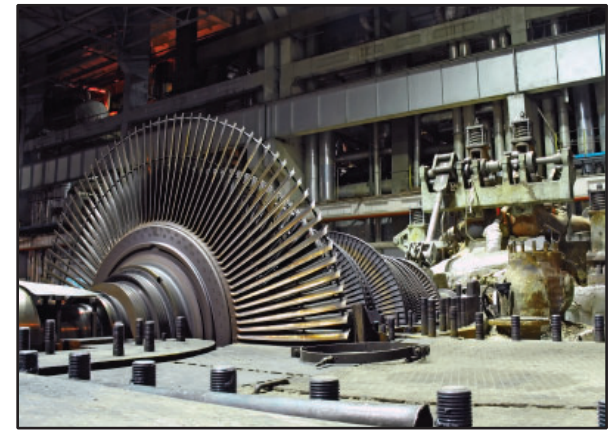
Mechanical Testing

Bond Pull/Adhesion Testing
Charpy Impact
Hardness Testing
Tensile Testing
Weld Evaluations



Chemical Analysis

Alloy Identification/Verification - PMI
Cleanliness (Internal, External)
Contaminant Identification
Material Checks
Polymer Analysis
XRD Analysis



Reliability is critical in the power generation industry. With millions counting on you, you need to be sure the parts and materials you and your suppliers are using meet the proper standards.

When materials fail, you need answers quickly to prevent further issues and future failures.

Whether you're an owner, OEM, Parts supplier, consultant or service and repair company, IMR is there to support you.

- Raw Material Verification
- Coatings Evaluations
- Failure Analysis
- Material Comparisons
- Corrodent/Contaminant Identification

